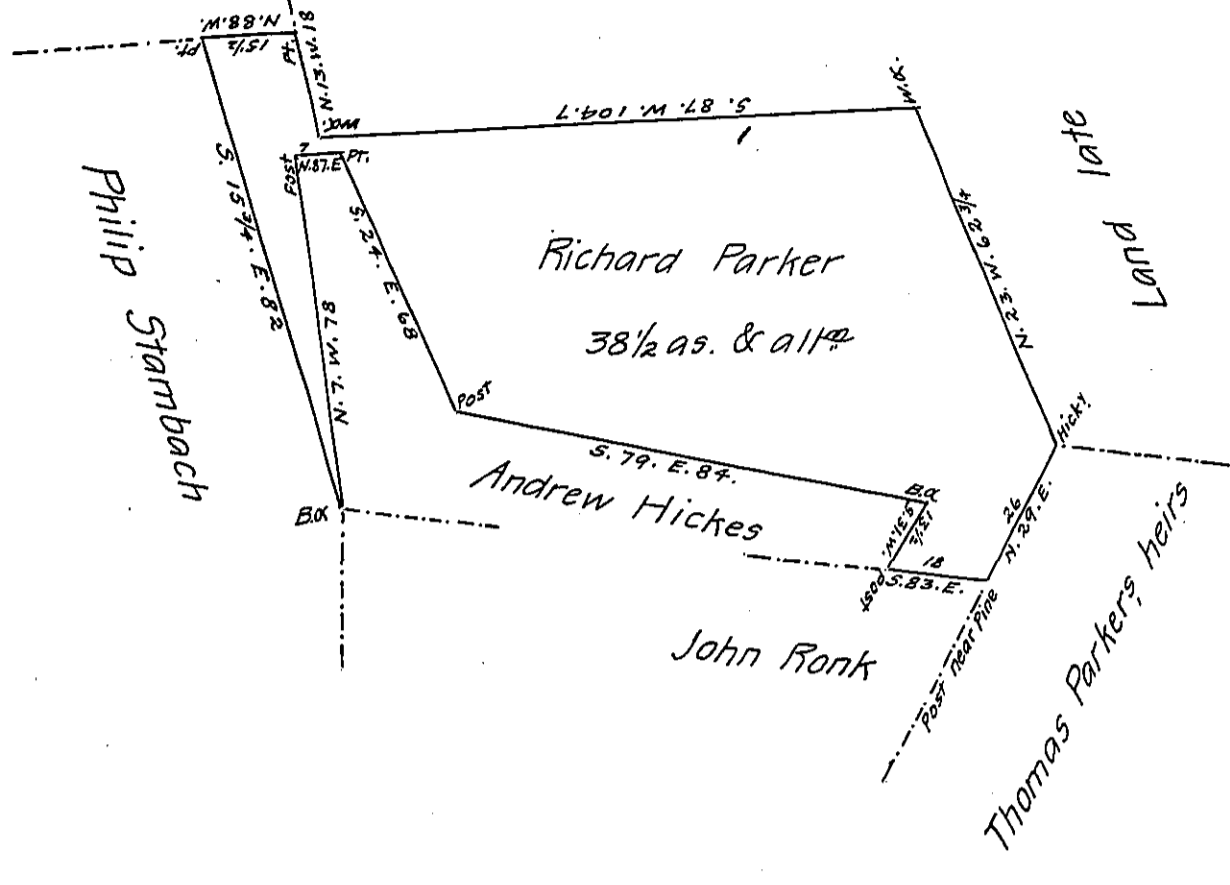


FORM No. 1.

John Campbell

of Singleton and Potts



A Draught of a Tract of Land situate in Frankford Township

Gumberland County Containing 38 1/2 as. & allowance of six pCent for Roads &c. It being part of a Larger tract of 105 1/2 as. & allowance Surveyed in pursuance of a warrant granted to Richard Parker, dated the 20th. day of April 1763. Surveyed and Struck off the 17th. Day of December 1807.

pr Wm. Wheeler D.S.

To Saml. Cochran Esqr.

S.G.

IN TESTIMONY that the above is a copy of the original remaining on file in the Department of Internal Affairs of Pennsylvania, made conformably to an Act of Assembly approved the 16th day of February, 1833, I have hereunto set my Hand and caused the Seal of said Department to be affixed at Harrisburg, this sixteenth day of June 1906

Secretary of Internal Affairs